



INDO - AMERICAN SENIORS ORGANIZATION OF NEW JERSEY (IASONJ)

838 Green Street, Suite 202, Iselin, NJ 08830

PHONE: (732) 283 -8666- E-mail: iasonj@yahoo.com Website: www.iasonj.org

KENYA, SOUTH AFRICA, ZIMBABWE & BOTSWANA TOUR

August 12- August 26, 2026

AFRICA TOUR ITINERARY

August 12: USA - Kenya, NAIROBI

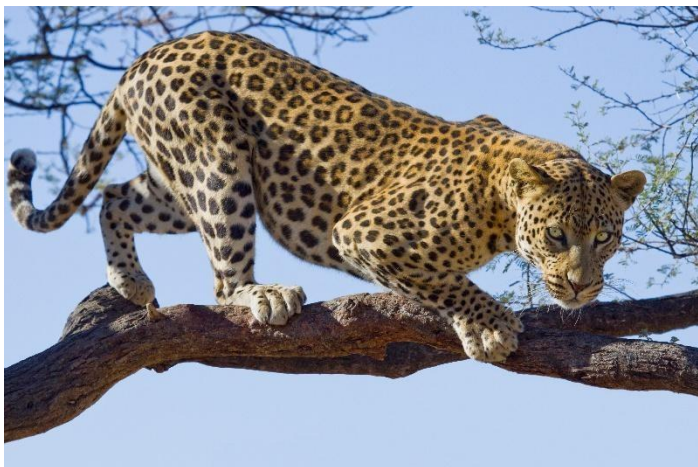
Today depart US on your own directly booked flight to Nairobi, Kenya

August 13: Arrive in Nairobi, Kenya

Arrive in Nairobi and after migrations and customs formalities, transfer to your hotel.



In the afternoon you will proceed to the Giraffe center where you will learn about the conversation efforts to conserve an endangered species and get to feed them and take selfies with the Giant animals. Overnight in Nairobi hotel..





INDO – AMERICAN SENIORS ORGANIZATION OF NEW JERSEY (IASONJ)

838 Green Street, Suite 202, Iselin, NJ 08830

PHONE: (732) 283 -8666- E-mail: iasonj@yahoo.com Website: www.iasonj.org

KENYA, SOUTH AFRICA, ZIMBABWE & BOTSWANA TOUR

August 12- August 26, 2026

August 14: Nairobi - Masai Mara

Early in the morning pick up from Nairobi hotel by our driver/guide and get a brief introduction about the Safari.

Depart for Masi Mara jungle by jeeps (drive time around 06 hours)



Arrive and check-in at your Safari Lodge in time for lunch. After lunch and refreshments, an evening game drive will be optional or relaxation at the hotel.



In the faunal sense, no part of Africa is richer or more eventful than Mara, which has managed to enshrine for

space Age the wonderment of pristine wilderness. Overnight at Safari Lodge.



August 15: Masai Mara

After breakfast, proceed to the park for a full day game drive, having carried a packed lunch so that you can have ample time to carry out a comprehensive game drive.



After lunch, continue with the game drive and head back to the lodge in the late afternoon. Overnight at Safari Lodge.

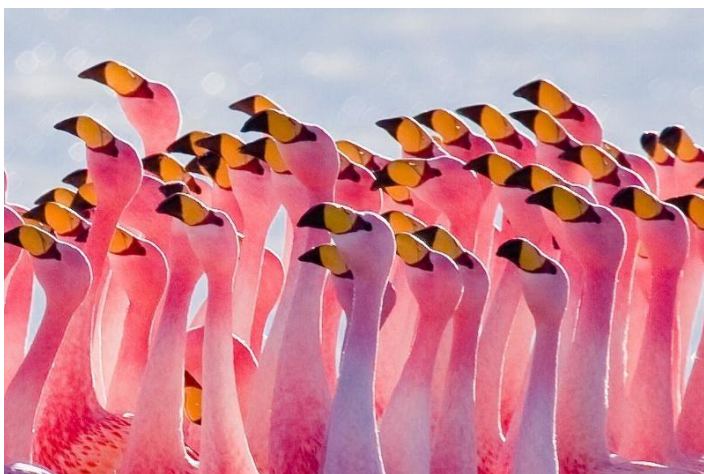
KENYA, SOUTH AFRICA, ZIMBABWE & BOTSWANA TOUR

August 12- August 26, 2026



August 16: Masai Mara – Lake Nakuru

Early breakfast, then drive (approx. 5–6 hours) to Lake Nakuru National Park. Arrive at your lodge for lunch.



Afternoon safari in Lake Nakuru, famous for flamingos, pelicans, and diverse birdlife. Hopefully spot rhinos, buffalo, zebras, and lions. Overnight at the lodge in Lake Nakuru.

August 17: Lake Nakuru – Nairobi

Have a morning game drive. Return to the lodge for lunch and check out the facility and leave for Nairobi. Arrive Nairobi in the evening. Overnight in Nairobi

August 18: Nairobi – Cape Town

After breakfast, transfer to the airport for your flight to Cape Town. Arrive in Cape Town and transfer to the hotel. Afternoon visit the Table Mountain on cable car,



Overnight in Cape Town.



August 19: Cape Town

After breakfast, enjoy the tour of Cape Town, also known as the Mother City. It is here that colonial South African history has its roots. The Dutch, French, German and English disembarked at Table Bay Harbor, bringing with them slaves from Eastern and Western Africa as well as



INDO – AMERICAN SENIORS ORGANIZATION OF NEW JERSEY (IASONJ)

838 Green Street, Suite 202, Iselin, NJ 08830

PHONE: (732) 283 -8666- E-mail: iasonj@yahoo.com Website: www.iasonj.org

KENYA, SOUTH AFRICA, ZIMBABWE & BOTSWANA TOUR

August 12- August 26, 2026

slaves from Malaysia, Indonesia and the Philippines. All these ethnic groups, along with the indigenous people, today form the 'Rainbow Nation'. This tour allows us to indulge in the enormous and rich heritage of this beautiful city as we bask in its extraordinary history. Attractions include City Hall and Green Market Square, a walk through the Company Gardens and we will also pass the Houses of Parliament. On the other side of town, we'll venture to Signal Hill, Clifton and Camps Bay and the colorful Malay Quarters also known as Bo Kaap. Overnight in Cape Town

August 20: Cape Town

Depart by private motor coach to view the beauty of the Cape of Good Hope along the coastal destinations of the Cape's Magnificent Mile. We move past the beautiful beaches of Hout Bay and Noordhoek..



If there is time, we will include Ostrich Viewing along the way as we head towards Cape Point, the mystical meeting point of the world's two greatest oceans. From Cape Point, after viewing a magnificent panorama of the Cape and watching many species of fauna and flora (including the Cape's unique Chacma baboons), we head for the penguin colony. This is nestled in a sheltered cove between the naval suburbs of Simons Town and Cape Point. If you are lucky, you may spot the largest animal on the earth-the whales during this scenic ocean drive. Overnight in Cape Town.

August 21: Cape Town - Kruger National Park

Transfer to airport for flight to Mpumalanga airport near Kruger National Park. Upon arrival, drive to your Jungle resort. After a brief orientation by the staff of the lodge, you will check in.

After lunch at the Lodge, embark on the exciting jungle safari. Southern Africa captivates everyone who is lucky enough to experience its power and magic. The concept of 'Safari' conjures up images of adventure, dramatic landscapes and exciting wildlife.

Overnight in the Lodge

August 22: Kruger National Park

An early morning call from the Ranger will wake you before first light, while the kitchen brews hot coffee or tea, and prepares cool fruit juices with a muffin, rusk or other freshly made delicacies. So, the morning safari begins. The bush is already alive; the air filled with birdsong as the rising sunlight dances off beads of dew on spiders' webs. Nobody, not even the tracker who can read the bushveld like a book, knows what's in store. He will watch the road leaning forward intently to find any print left by a predator during its hunt in the dark. We will hopefully encounter all of the Big Five members: the lion, the leopard, the elephant, the buffalo and the rhinoceros. Overnight in the Lodge

August 23: Kruger – Johannesburg

After early morning sunrise safari & breakfast. Enjoy your last morning safari. Check in at your hotel and drive to Johannesburg. Arrive and proceed on a panoramic tour of Johannesburg. The Story of Johannesburg is the story of Gold. When the first white pioneers arrived in this region, they had no inkling of the wealth that lay beneath their feet. The discovery of the precious metal in the late 1800's changed all of that, and as you will see, today Johannesburg is the commercial, industrial and mining capital of South Africa. Another fascinating experience is a visit to the pulsating township of Soweto. The mines of old, of course, needed a plentiful supply of cheap labor, and Soweto, together with many of the other townships around Johannesburg, housed the huge numbers of migrant and resilience of the South African nation. We explore this fascinating township, trying to obtain an appreciation for



INDO – AMERICAN SENIORS ORGANIZATION OF NEW JERSEY (IASONJ)

838 Green Street, Suite 202, Iselin, NJ 08830

PHONE: (732) 283 -8666- E-mail: iasonj@yahoo.com Website: www.iasonj.org

KENYA, SOUTH AFRICA, ZIMBABWE & BOTSWANA TOUR

August 12- August 26, 2026

the history and heritage contained within its bounds.
Overnight at Airport hotel in Johannesburg

August 24: Johannesburg – Victoria Falls, Zimbabwe

After breakfast, check out of the hotel and transfer to airport for flight to Victoria Falls. Arrive and after Migration formalities, transfer to hotel.



In the afternoon, Visit Victoria Falls. Explore this land of potent beauty to discover one of the seven natural wonders of the world- Victoria Falls. Journey to this magnificent place and witness the greatest mass of falling water on earth as it plunges down a sheer rock face, spraying its mystical mist hundreds of meters in the air. The Victoria Falls, (Mosi-Oa-Tunya, the smoke that Thunders), without a doubt, constitutes one of the most spectacular natural wonders of the world. You can gaze at the mighty Zambezi as it flows, broad and placid to the brink of basalt lip seventeen hundred meters wide before taking a headlong plunge into the frothy chasm of the gorge below.
Overnight in Victoria Falls.

August 25: Victoria Falls - Chobe National Park, Botswana - Victoria Falls

Early morning after breakfast, drive to Chobe National Park in Botswana – home of the great African elephants.



Cross over the border into Botswana by road. Arrive in Chobe National Park and proceed on tour of Chobe National Park. Enjoy a full day safari at Chobe National Park in Botswana that will bring you closer to African elephants.



After lunch at a Lodge, enjoy the Jungle Safari in the Chobe National Park. The park is probably best known for its spectacular elephant population: 70,000 elephants today, it is the highest elephant concentration of Africa

Moreover, most of them are probably part of the largest continuous surviving elephant population on Earth. The elephant population seems to have solidly built up since 1990, from a few thousand. They have not been affected by the massive illicit exploitation of the 1970s and 1980s. One thing is a given in Chobe: just a brief drive along any of its roads quickly reveals a torn branch, a trumpeting call, an enormous grey shape ghosting out of the bush ...all the



INDO – AMERICAN SENIORS ORGANIZATION OF NEW JERSEY (IASONJ)

838 Green Street, Suite 202, Iselin, NJ 08830

PHONE: (732) 283 -8666- E-mail:iasonj@yahoo.com Website: www.iasonj.org

KENYA, SOUTH AFRICA, ZIMBABWE & BOTSWANA TOUR

August 12- August 26, 2026

unmistakable signs that this is elephant territory. At Chobe, you can get so close to elephants that you can hear the deep rumblings as they communicate with each other. In the evening return to your hotel in Victoria Falls. Overnight in Victoria Falls.

August 26: Victoria Falls - Abroad

After breakfast, depart to Victoria Falls airport for your onward directly booked flight to your abroad destination

TOUR ENDS

LAND PACKAGE COST

**KENYA, SOUTH AFRICA, ZIMBABWE &
BOTSWANA**

August 12- August 26, 2026

Per person sharing double room - \$ 6655

Single Supplement \$ 1885



**\$ 200 EARLY BIRD DISCOUNT
if booked before April 25, 2026**





INDO – AMERICAN SENIORS ORGANIZATION OF NEW JERSEY (IASONJ)

838 Green Street, Suite 202, Iselin, NJ 08830

PHONE: (732) 283 -8666- E-mail:iasonj@yahoo.com Website: www.iasonj.org

KENYA, SOUTH AFRICA, ZIMBABWE & BOTSWANA TOUR

August 12- August 26, 2026

Our Land cost includes:

- All intra-Africa airfare in coach class as per program.
- First Class hotel/Jungle Lodge accommodation sharing a standard room selected by Pollina Tours.
- All transfers, sightseeing, excursion tours as per program by air-conditioned coach
- English speaking guide.
- Entrance fee to the places of visit.
- Buffet breakfast daily at the hotel.
- Dinner daily at local restaurants or hotels.
- All three meals during Jungle safari tour
- All applicable airport taxes and fuel surcharges

NOT INCLUDED: Any visa fee, any international airfare not mentioned in the Itinerary. Any Government issued mandatory vaccination requirements and charges needed to embark on the trip, Travel Insurance, portorage at the airport, meals not mentioned in the itinerary, alcohol, drinks, items of personal nature such as laundry, tips or gratuities, telephone, room service, any increase of government-imposed taxes, any other items not mentioned in the above tour inclusion list.

Please read all the terms and conditions carefully before filling in the Tour Booking form and mailing with your deposits and copy of passport.

TOUR BOOKING: POLLINA TOURS AND TRAVEL, located at 1 Dupont Street, Suite 213, Plainview, New York 11803 is our Tour Operator to Africa.

FORM OF PAYMENT: Please make the check or Money order payable to IASONJ for deposit amount \$ 2000 per person and mail to

**IASONJ. 838 Green Street, Suite 202, Iselin, NJ 08830
Attn: Mrs. Usha Shah. Phone:(732) 283-8666.
Email: iasonj@yahoo.com- Website: www.iasonj.org**

The remaining balance is due 90 days before departure.

TRAVEL INSURANCE: Pollina Tours do not sell any travel insurance. We strongly recommend that you obtain a comprehensive Travel Insurance coverage, including but not limited to trip cancellation, delay, loss of deposit, medical expenses, personal accidents and death, loss of baggage, personal belongings. CFAR (Cancel for Any Reason) Travel Insurance Policy is one option that you must discuss with your Travel Insurance Company, as it offers a wider range of coverage if you cancel for any reason. Most Travel Insurance companies want you to buy insurance at the time of making your initial tour deposit to obtain the best coverage. Please contact and discuss all options available to you from the Travel Insurance companies of your choice before signing up on the tour.

CANCELLATION AND REFUND If the tour is cancelled by the tour participants for any reason or for any circumstances beyond the control of Pollina Tours & Travel, Inc, its agents, and its service providers, cancellation fee will be applicable. CFAR (Cancel for Any Reason) travel insurance policy is one option that you must discuss with your Travel Insurance Company, as it offers a wider range of coverage if you cancel for any reason.

We highly recommend purchasing Travel Insurance policy from the travel insurance company of your choice, covering all eventualities including, but not limited to, trip delay, trip cancellation, medical evacuation, illness, pandemic, endemic, outbreak of disease, terrorism, inclement weather, natural disaster, death of the traveler, accident etc. that can protect yourself from cancellation fee as mentioned in the chart below:

Tour cancellation date	Cancellation Fee (per person)
Before 180 Days of Departure	10% of Tour Cost
Between 179 - 120 Days	25% of Tour Cost
Between 119 – 90 Days	50% of Tour Cost
Between 89 – 60 Days	75% of Tour Cost
Within 59 Days of Departure	100% of Tour Cost



INDO – AMERICAN SENIORS ORGANIZATION OF NEW JERSEY (IASONJ)

838 Green Street, Suite 202, Iselin, NJ 08830

PHONE: (732) 283 -8666- E-mail: iasonj@yahoo.com Website: www.iasonj.org

KENYA, SOUTH AFRICA, ZIMBABWE & BOTSWANA TOUR

August 12- August 26, 2026

It is mandatory for passengers to make all cancellations in writing, stating the reason for cancellation and same must be received in our office. Most refunds generally take 6-8 weeks to process.

TRAVEL DOCUMENTS: It is the sole responsibility of each passenger/tourist to obtain and verify that all of their travel documents, such as passport, visa, and airline tickets, vaccination requirements etc are in order and meets the guidelines to embark on the trip.

HEALTH: You must consult with your physician about every important aspect of your health-related issues, including seasickness, motion sickness, vaccinations such as Yellow Fever, Hepatitis, malaria prophylaxis etc. to ensure that you are in good health to engage in overseas travel. In addition, you are expected to carry your own regular medications, which may not be available aboard. All our overseas tours may require considerable walking and driving, sometimes on uneven, dusty and bumpy roads and snow conditions. You may also need to take stairs and inclines during the tour. No individual assistance to passengers requiring wheelchairs can be provided, as many places may not be accessible wheelchairs and may be challenging for the physically handicapped. For Information on vaccinations and other health precautions, such as safe food and water precautions and insect bite protection, may be obtained from the Centers for Disease Control and Prevention's hotline for international travelers at 800-CDC-INFO (800-232-4636) or via the CDC's Internet site, at www.cdc.gov/travel. For information and health guidelines about outbreaks of infectious diseases such as COVID 19 and other disease abroad, please consult the World Health Organization's (WHO) official website. All passengers are personally responsible to ensure that they comply with overseas mandatory medical/vaccination requirements and are medically cleared by their Physicians to embark on the trip.

AIRLINE GROUP BOOKING AND SEAT ASSIGNMENTS: POLLINA TOURS makes the booking with the Group Department of the airline, which means all the group members must travel together to and from a common gateway, as one Group. The Group tickets are

lower fare tickets and carry restrictions. The tickets are nonrefundable, non-transferrable, non-re-routable, and non-endorsable. Policies governing seat assignments for groups vary greatly by airline. Most airlines currently offer preferred seating, a system which allows them to charge additional fees for more desirable seats, which may include window and aisle seats. As a result, many seats displayed on airline seat maps are set aside for clients willing to pay additional fees for them. Some seats may only be accessible at airport check-in, although sometimes passengers with frequent flyer status may have earlier access. Seat assignments preferences are not guaranteed by Pollina Tours. Airline reservation agents are often prohibited from assisting with seat requests for group reservations.

GROUP HOTEL/CRUISE BOOKING: POLLINA TOURS makes the booking of the hotel/cruise in the specified hotel/cruise in "Standard" twin-bedded (two single beds) rooms or "Standard" double bedded (one double bed) room with private facilities, unless you have specifically requested and paid for an upgraded room category. Special requests, such as bed types, smoking preference and connecting rooms are subject to availability. Room selection in all cases, unless otherwise reserved, is strictly at the discretion of the hotel's management on a run-of-house basis.

GROUP MEALS BOOKING: POLLINA TOURS make the reservation for the Group Meals arrangements at the hotel or local restaurants based on the hotel or restaurant's Buffet or Set menu basis policy. All efforts are made to offer Vegetarian and Non-Vegetarian menu choices to the Group members. However, Pollina Tours cannot make multiple dinner menu requests based on each group members' individual request, personal taste, likes and dislikes. Due to the presence of food allergens in the processing environment and in meals and snacks served, Pollina Tours and its suppliers cannot guarantee an allergen-free meal. We encourage customers to review any health/food allergy concerns with their physicians prior to joining the tour.



INDO – AMERICAN SENIORS ORGANIZATION OF NEW JERSEY (IASONJ)

838 Green Street, Suite 202, Iselin, NJ 08830

PHONE: (732) 283 -8666- E-mail:iasonj@yahoo.com Website: www.iasonj.org

KENYA, SOUTH AFRICA, ZIMBABWE & BOTSWANA TOUR

August 12- August 26, 2026

RESPONSIBILITY : Pollina Tours & Travel, Inc. and/or their agents give notice that all tickets, vouchers and the coupons issued by them and all arrangements for transportation or for conveyance/hotel accommodation, sightseeing, excursions, etc, made by them, as AGENTS of the passenger upon the express condition that they shall not be held liable for any injury, damage, loss , accident, death, delay or irregularity which may be occasioned either by reason or defect of any vehicle, or through the act or default of any person or company engaged in conveying or housing the passengers or in connection therewith, or of any hotel proprietor or employee. Pollina Tour and/ or their agents can accept no responsibility for cancellation penalties or losses or incidental expenses due to delay or change in schedules of airline, rail, motor coach, cruise or any transportation companies etc, hotel overbooking or default, sickness, injury, death, weather, strike, political or social unrest, disease, epidemic, pandemic, terrorism, natural calamities, quarantine or any other causes beyond the control of Pollina Tours & Travel, its agents and suppliers of services. All such losses or incidental expenses will have to be borne by the passengers. Baggage is at owner's risk throughout the tour. Obtaining a suitable travel insurance policy to cover the medical and non-medical eventualities from any Travel Insurance company of your choice is solely the responsibility of each passenger/tourist booked on our tour. Pollina Tours & Travel reserves the right to accept or reject any person as tour participants, to expel any tour participants from the tour, to make changes in the itinerary whenever the company deems it is necessary for the comfort, safety and convenience of the participants or their agents/service providers. Although, all safety measures are taken by our suppliers to ensure you have an enjoyable and safe tour. However, our Service provider will require you to sign their responsibility form to not hold them responsible for any injury, accident, death, etc., caused to you during any adventure tourism activities, jungle safari, etc. which is beyond their control. All prices are quoted in US Dollars. The transportation, airlines, rail, cruise, ferry companies, etc, concerned are not to be held responsible for any act, omission, or events during the time passengers are not on board their carriers and

conveyance. The passenger contract in use by the airline carrier, when issued, shall constitute the sole contract between the transportation company and the purchaser of the Tour(s) and/or passengers. Typically, check- in time at the hotels is 3:00 PM and check out time is 12 noon. Sequence of the itinerary is subject to change, due to circumstances beyond our control.